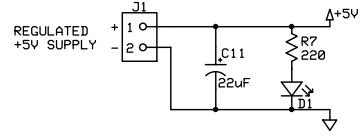
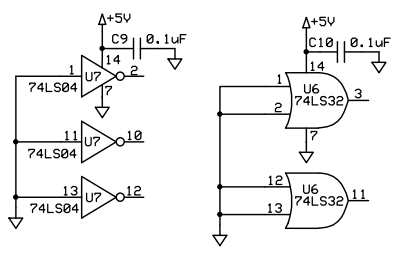


DIR = low, transfer B to A  
 DIR = high, transfer A to B

**MEMORY MAP**

- >0000 - >7FFF ---- 32Kbyte EPROM
- >8000 - >FFFF ---- 32Kbyte RAM

**UNUSED GATES**



**NOTES**

- 12MHz crystal gives processor speed of 3MHz, compatible with the normal TMS 9902ANL.
- 16MHz crystal gives processor speed of 4MHz and needs TMS 9902ANL-40 device and modified Baud rate timer in the software.
- Processor pin 2 labelled as /DEN on some datasheets.
- Processor pin 6 labelled as WAITGEN on some datasheets.

<b>TMS 99110</b>		
<b>PCB and Breadboard Project</b>		
Stuart Conner	Rev V3 06/12/2020	Page 1 of 3

